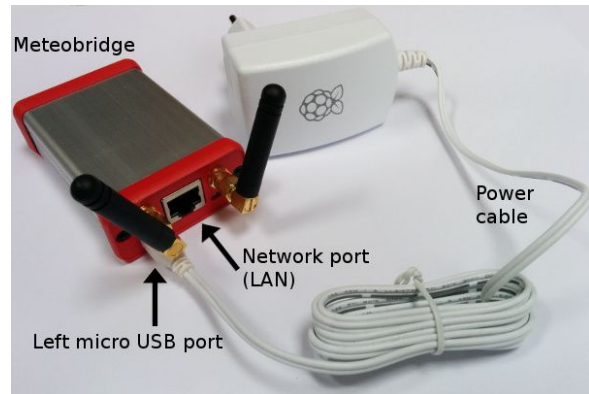


Installation of the Windfinder weather station

Weather station (Davis Vantage Vue)



Follow the instructions in the Davis Vantage Vue Integrated Sensor Suite Installation Manual (that came with this package or go to <http://goo.gl/FEITGY>). Ignore the other documents that come with the Vantage Vue.



Meteobridge Pro+

Plug the network cable into the network (LAN) port of the Meteobridge Pro+ and the other end into a free LAN port of your DSL or UMTS router. Then connect the micro USB end of the power cable into **left port** on the backside of the Meteobridge and the other end into a power socket. If your internet connection works the Meteobridge will send weather data to Windfinder every 5 minutes.

If you want to change the configuration of your Meteobridge or have a technical problem (else go to the next chapter): Open a browser on a computer which is connected to the same router / network as the Meteobridge and type the following URL into the address line of your browser (Internet Explorer, Chrome, Firefox, Opera, Safari): magicip.meteobridge.com . (If that does not work type the IP address from the display on the Meteobridge into your browser, e.g. 192.168.0.2)

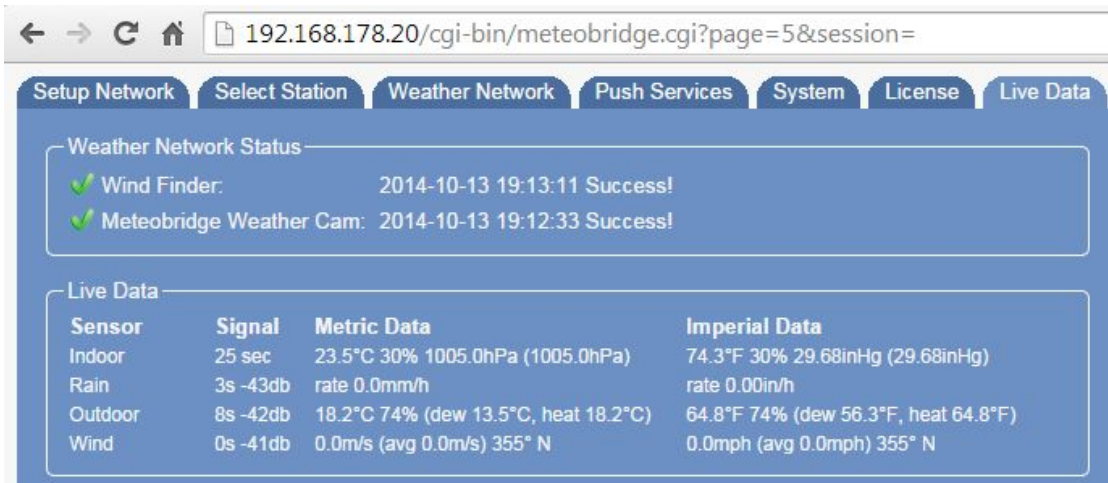
If everything is set up correctly the login screen of the Meteobridge will appear. If the login screen does not appear wait a few seconds and reload the page. The Meteobridge needs about 60 seconds to boot after being connected to electric power. Log into your Meteobridge:

User name: meteobridge

Password: meteobridge

If a license agreement appears accept it and click "Save and Apply". Go to the tab "Live Data". In the box "Live data" check if there are values in the fields "Rain", "Outdoor" and "Wind". If not press and release the white button on the bottom side of the Vantage vue sensor suite (according to Vantage Vue Integrated Sensor suite installation manual, chapter

“Install the battery” on page 4) and check again.



Internet connection via mobile network

If you **don't** have a landline internet connection you can either connect your Meteobridge via network cable to a UMTS/3G router. This works exactly the same way as described above or you plug a USB 3G dongle into the USB on the front side of your Meteobridge.

Log into your Meteobridge in the browser at magicip.meteobridge.com and click on the “network” tab. Click the radio button “3G/GPRS”, select Mode “3G/GPRS”, select provider “Vodafone Germany”, “T-mobile Germany” or “O2 Germany”. If you want to be able to access Meteobridge’s configuration interface then click the check box “act as access point with SSID “MB-XXXXXXXXXXXX” and enter a passphrase and click “Save and apply and reboot”.

Embed weather data into your website

After your weather station has been online for at least 24 hours go to <https://www.windfinder.com/apps/homepageweather/>, search for weather station and follow the instructions to embed the live weather from your weather station and/or the forecast from your location into your website.

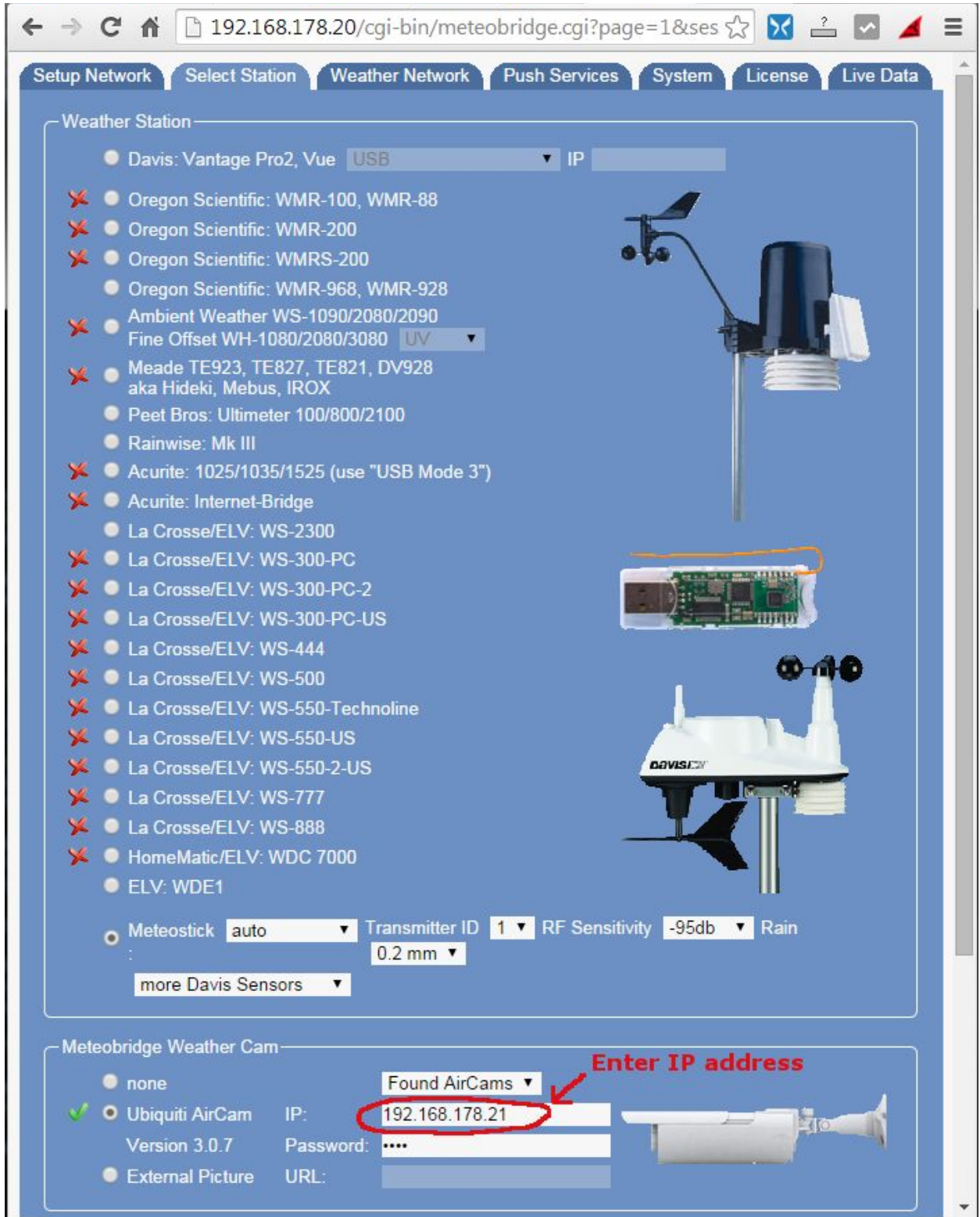
Webcam (Ubiquiti Aircam)

Configuration

If you also have an Aircam, Unifi Video Camera or Unifi Video Pro Camera please follow the instructions in the booklet “Aircam Quick Start guide” that comes with the Aircam until chapter “Connecting the power” (Step 3 on page 11). Make sure that your computer is connected to the same network (router) as your Aircam. Ignore the rest of the document.

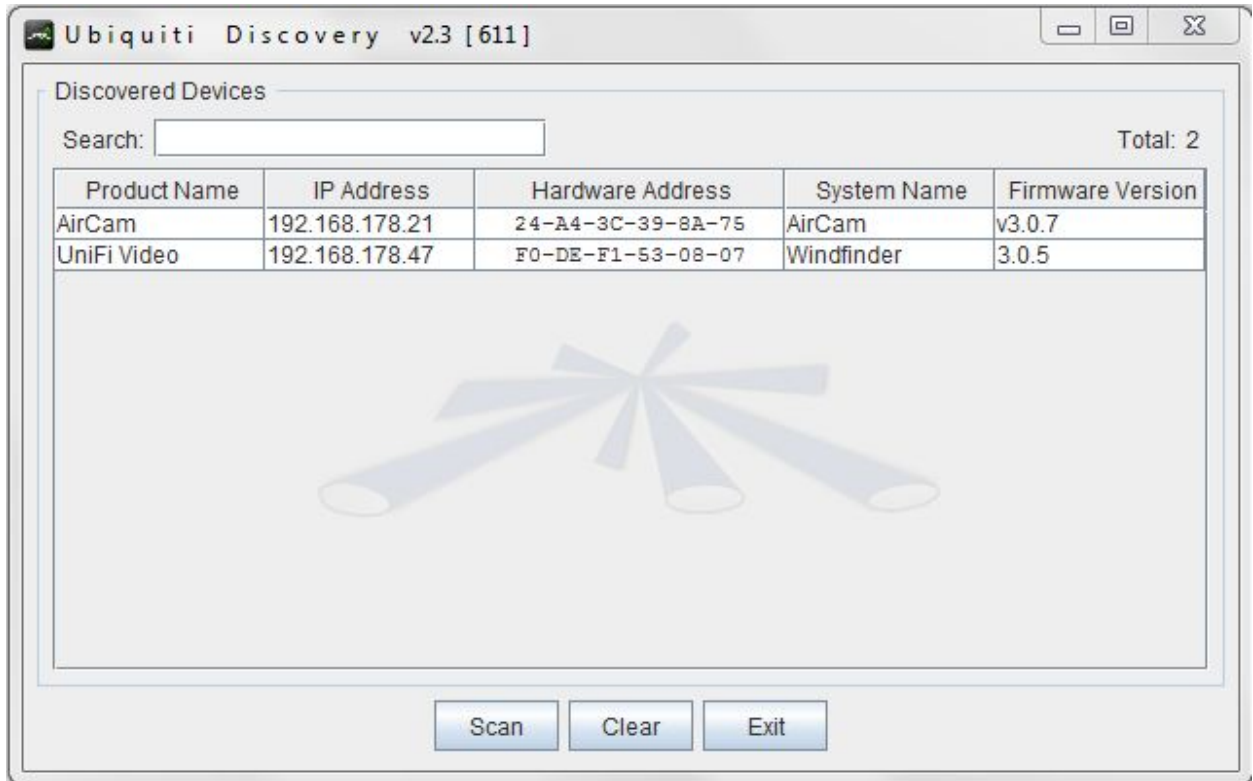
Before logging in you may need to wait 30 seconds until the Aircam is ready. Log into the Meteobridge configuration as described above. Go to the tab “Select station”. In the box “Meteobridge Weather Cam” click on the radio button “Ubiquiti Aircam”. If there is a dropdown menu click on it. It should display a text like “Found AirCams”. The IP address of your Aircam should be detected automatically and simply select this from the drop down

menu (e.g. 192.168.178.21) or enter it in the field "IP:". Enter the password "ubnt" in the field below.



Click "Save" on the bottom of this screen. To check if your webcam's IP address was detected correctly click on the aircam symbol on the right hand side of the field "IP". If the current view of the webcam is displayed proceed to the next chapter.

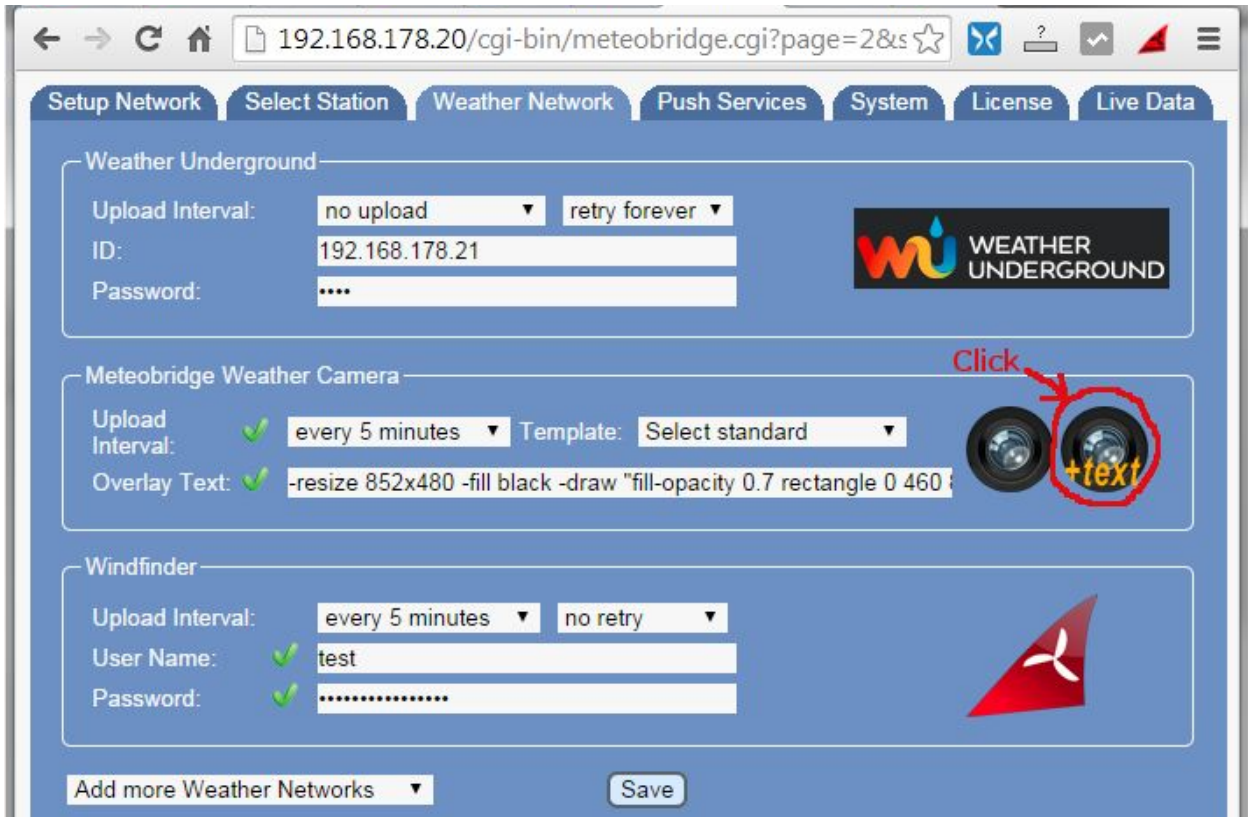
Only if Meteobridge did not show a drop down menu or could not detect the IP address automatically go to <https://www.ubnt.com/download/utilities>, scroll to the bottom of the screen, download and unzip the “Device discovery tool (all platforms)”. (Java needs to be installed on your computer for this tool to work. If you don't have Java you can get it at: <https://java.com/en/download/>.) Enter the directory and execute “ubnt-discovery-v2.3.jar”. A new window will pop up and display the IP address of the Aircam:



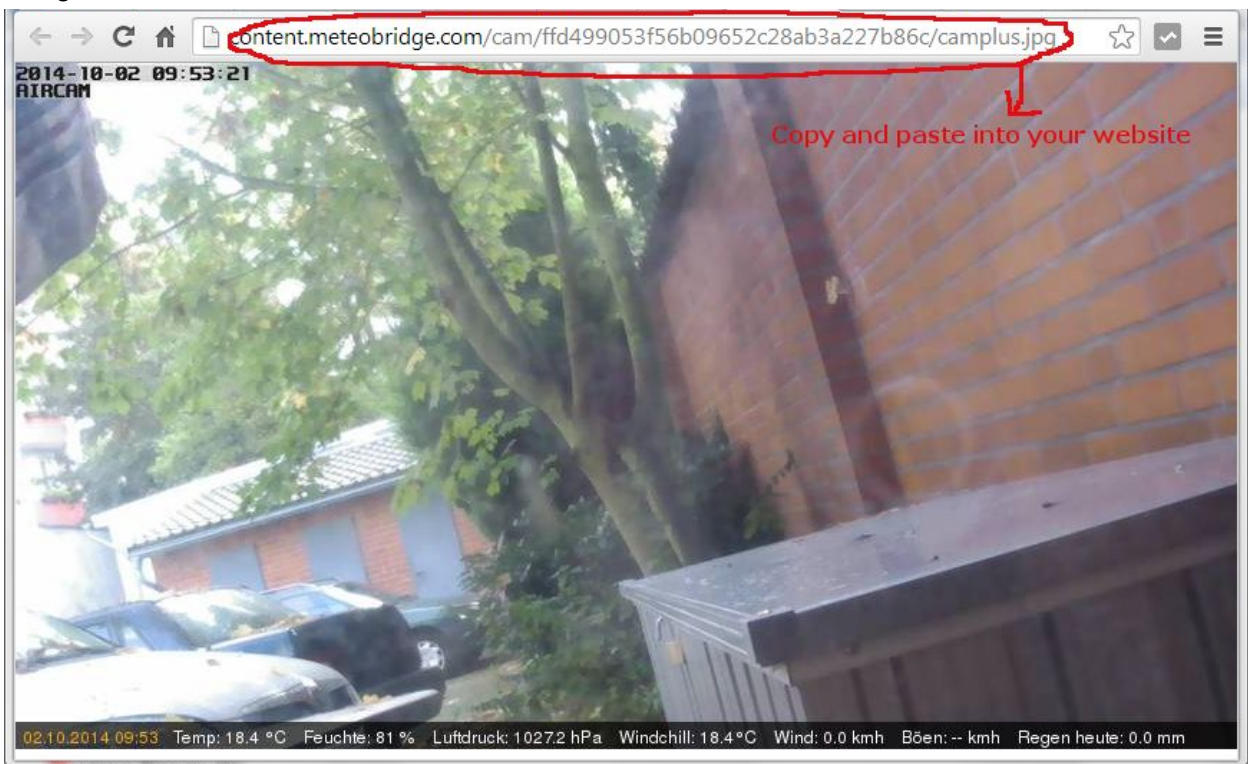
Enter the IP address of the Aircam in the Meteobridge configuration in the field “IP:” (see previous screenshot) and click the webcam symbol again to check if the current webcam view is shown.

Embed Webcam image

In order to embed the webcam image (including live weather data) into your website click on the tab “Weather network” of the Meteobridge interface.



Click on the lense “+text”. A new window or tab will open in your browser. Copy the address string:



..into the following HTML code:

```

```

Example Result:

```

```

Copy the entire string above into your website where you want to show the webcam image. If you are not familiar with web design or website management ask your web designer.

If you want your webcam image to appear on www.windfinder.com please go to <http://www.lookr.com/add/form> and submit your webcam with the page URL from the address bar of your browser (see above). It will automatically appear on Windfinder after validation.

Webcam Streaming

The Aircam generates a live video stream. Windfinder does not provide any support for video streaming. However here is a short guide to help you set up your video stream on your website: <http://downloads.windfinder.com/weather-station/webcam-streaming-manual.pdf>

Support

More information and configuration options about the Meteobridge are available at for the Meteobridge at : <http://www.meteobridge.com/>. and for the Aircam at: <https://help.ubnt.com/>. If you have any problems with the installation or configuration please contact info@weerhuisje.nl.